

Nexus

BUILDING FOR THE FUTURE

Vancouver Island based PreFab
Buildings Manufacturer



Who is Nexus?



- ❖ Founded in 2017
- ❖ Specializing in Modular building design and fabrication
- ❖ We have over 50 combined years of experience in commercial and residential building product design and manufacturing
- ❖ We leverage on expertise in timber and steel fabrication and assembly
- ❖ Key advantages are reduced waste, cost savings and speed to market

What do we do?

Residential Single Family Homes and Garden Suites/ADU's







**Multifamily Housing
32 Unit First Nations Housing Complex**



How most buildings are built today...



- ❖ Site Built - Open to the elements
- ❖ Waste - Considerable waste onsite
- ❖ Labour - Rising trade costs
- ❖ Budget - Unpredictable cost outcome
- ❖ Time - Lengthy build times

PreFab Time Savings vs. Traditional Site Built

Modular Construction Schedule



Site Built Construction Schedule



The Future of Building Framing

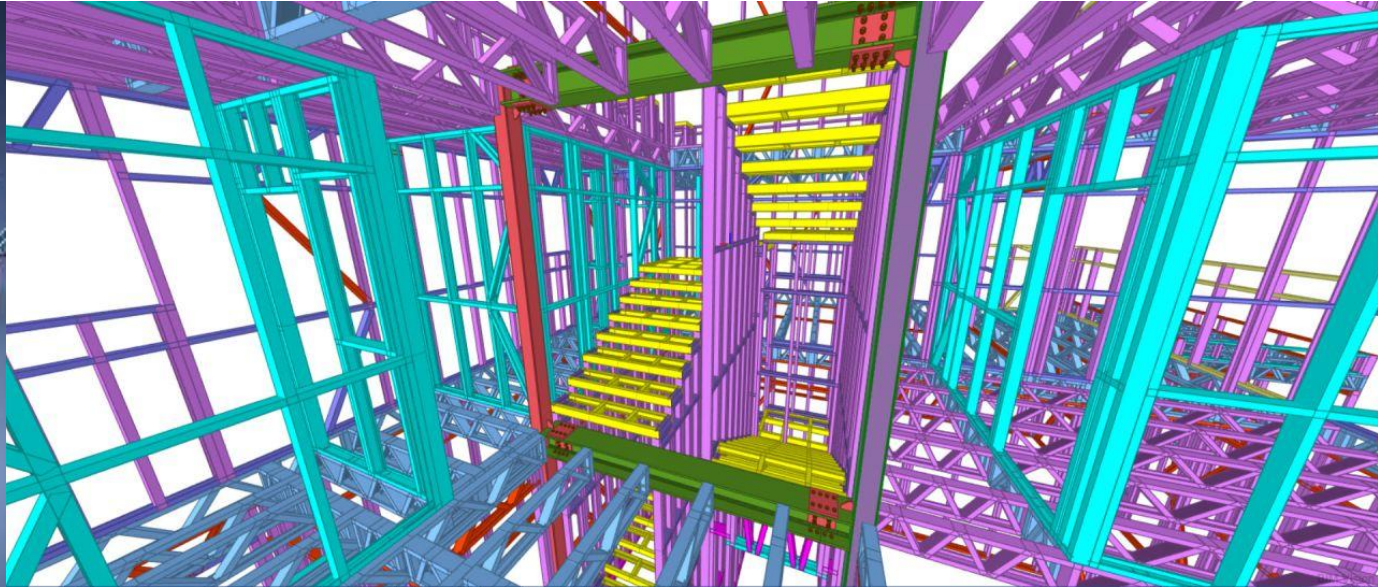
3D Printing of Steel Frames

- can produce the complete floor, wall, and roof framing systems
- virtually **ZERO WASTE** at speeds far faster than traditional wood framing
- extrudes" each component specific to its location in the home.
- Can be easily assembled with little to no training required

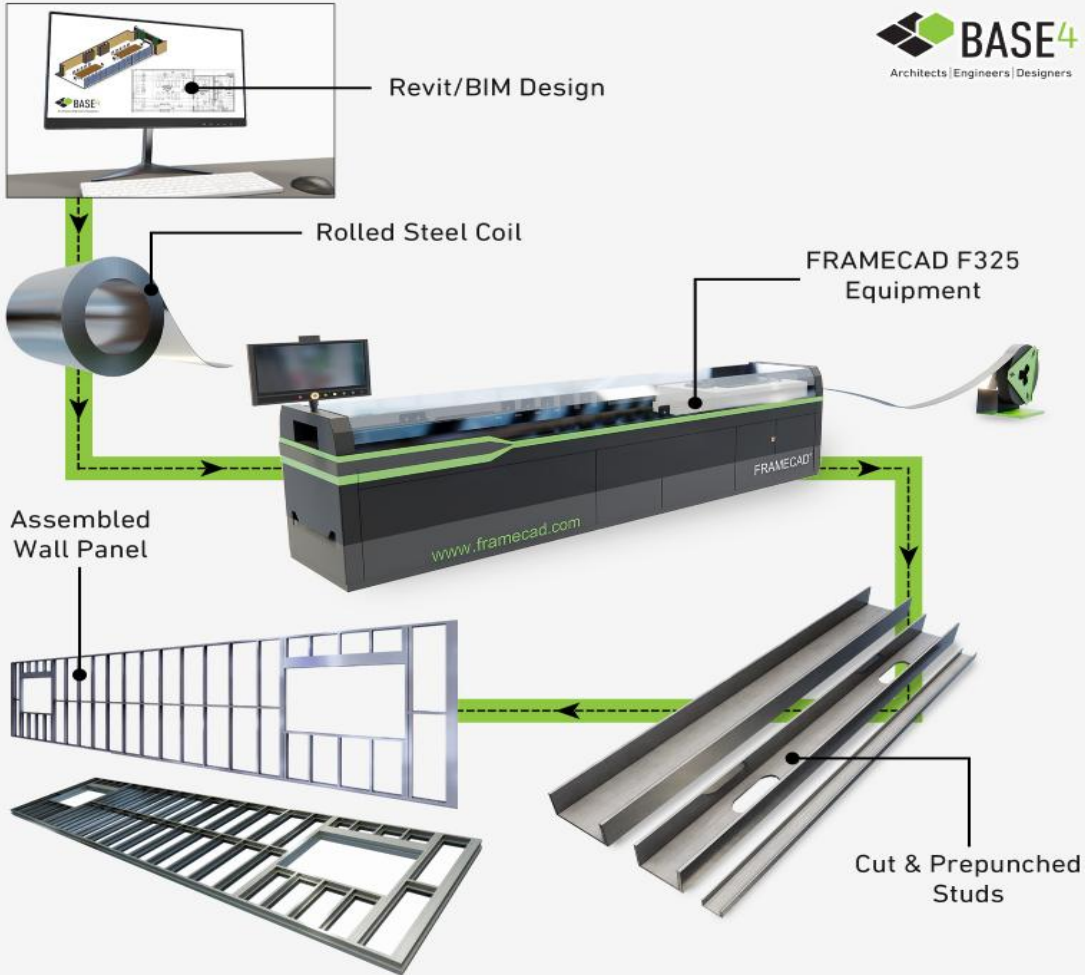


Design and Engineering

Nexus utilizes next generation rendering software to design and model each home with precision accuracy. These models output to machinery that will then 3D print the entire steel frame system of the home.



LIGHT STEEL ROLL-FORMING TECHNOLOGY PROCESS



Steps in the Process

1. Engineer design and rendering.
2. Load raw material (coiled steel) into CAD machine.
3. CAD machine produces precise and specific components - pre-shaped and pre-cut for ready implementation.
4. Shop team assembles and secures framing based on existing labelling and plans.
5. Done!

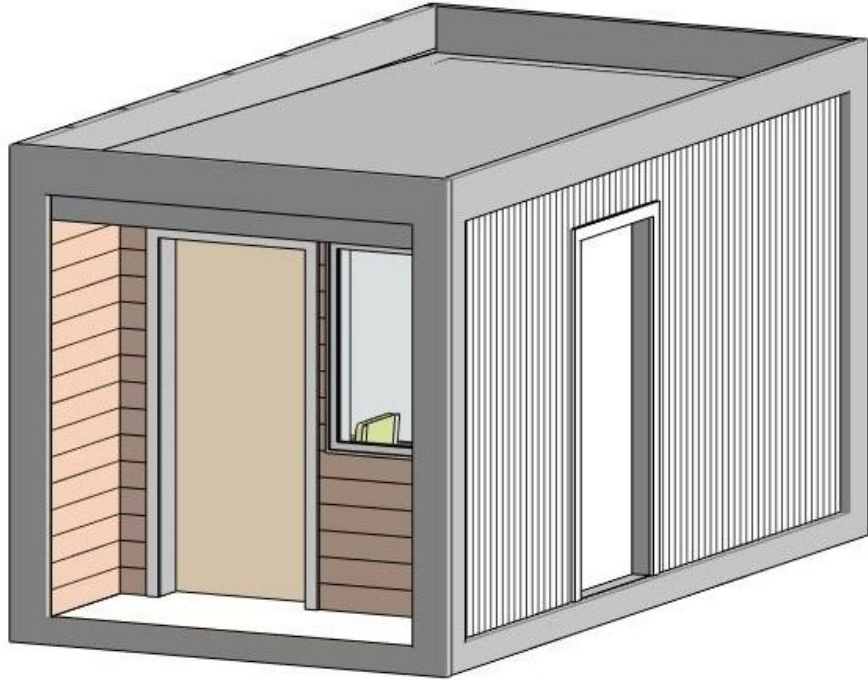


Shelter Units

Modularized Housing Units



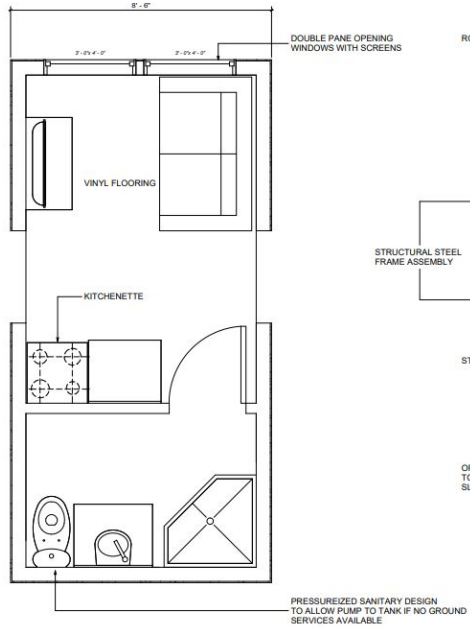
Nexus Shelter Units - Building Code Compliant



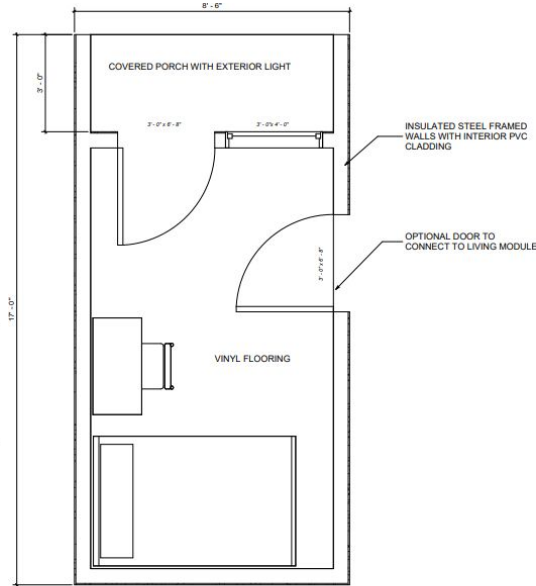
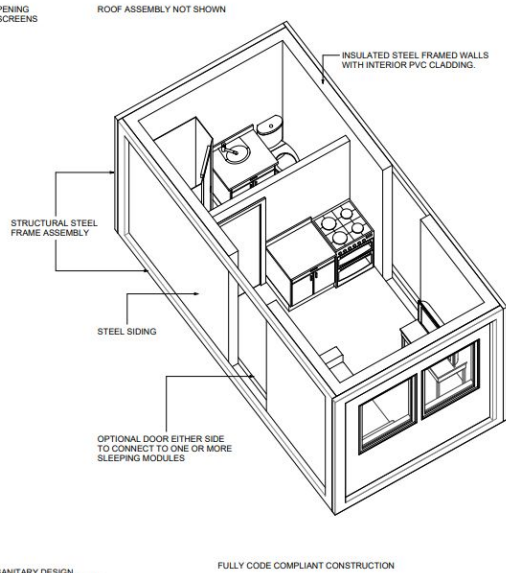
FULLY ASSEMBLED - READY TO PLACE AND OCCUPY

- Size is 8' x 17' OUTSIDE SIZE includes roof overhang on the front **136 SQUARE FEET**
- Full Steel framing system
- Exterior Dens Glass Commercial Sheeting
- Interior wall paneling - Trusscore PVC waterproof system - No Painting or drywall damage!
- exterior steel siding
- Fully insulated walls and ceilings and floors
- Commercial Waterproofed roof assembly
- Exterior 32" wide steel Door with locking hardware
- Two sliding 36" x 42" Sliding double pane vinyl windows with screens
- Through wall ERV ventilation system
- Vinyl Plank Flooring
- Basic wiring as follows :two wall outlets, one switched LED light inside, one small wall heater (surface mounted) All items wired to basic junction box on rear of unit ready for onsite hookup of electrical.

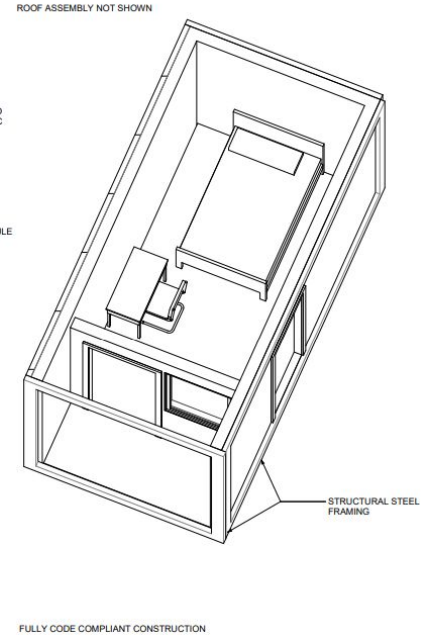
Individual Sleeping and Living Modules



LIVING MODULE



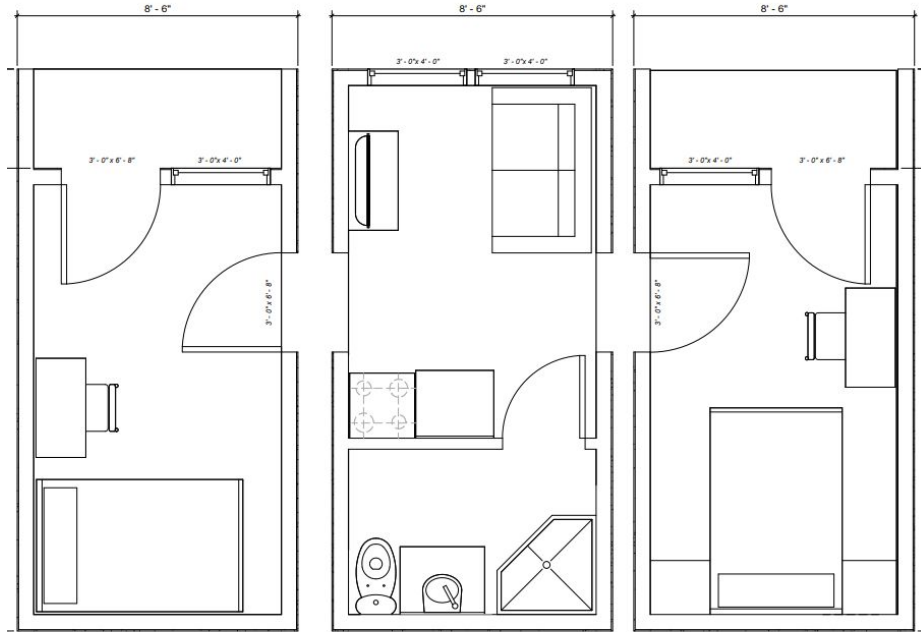
SLEEPING MODULE



Modules can be connected together - and stacked!

INDIVIDUAL MODULES CAN BE CONNECTED TOGETHER ON SITE.

FLEXIBLE OPTIONS

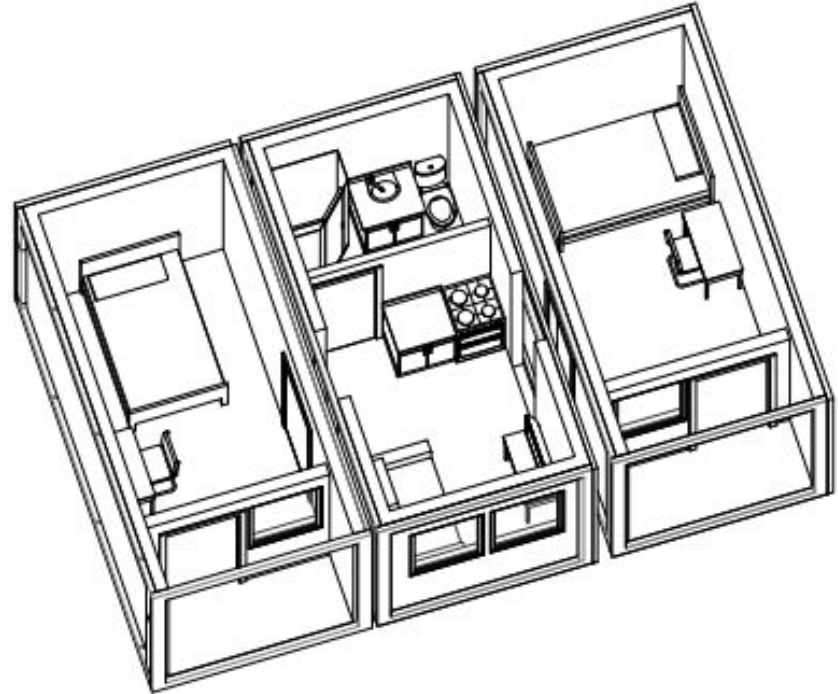


SLEEPING MODULE

LIVING MODULE

SLEEPING MODULE

OPTION TO CONNECT LIVING AND SLEEPING MODULES TOGETHER.



Why Now?

- Infill Density without disruption
- ADU's in all Municipalities
- Shelter Housing
- Multifamily
- Speed and Efficiency
- Optimization and Waste Reduction





Thank you for your time today

Please come outside and view our Shelter Models on Display!